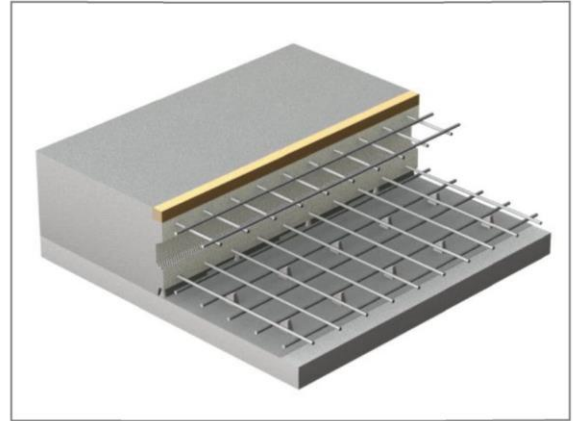
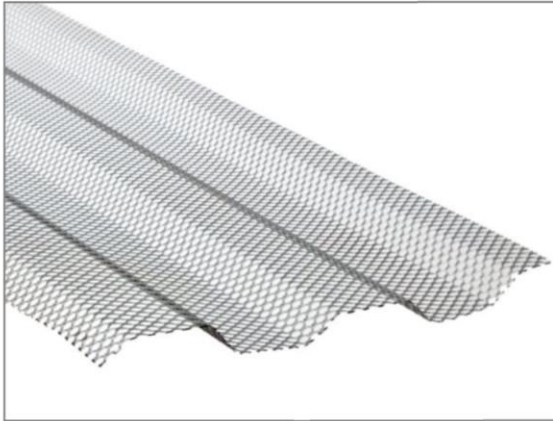


PRODUCT DATA SHEET

STP PROFILED STAY-IN-PLACE FORMWORK



PRODUCT DESCRIPTION

STP profiled stay-in-place formwork is a metal toothed mesh with a contoured shape. It eliminates slab faulting between neighbouring reinforced concrete slabs and ensures sealing of the construction joint. It does not have its own supporting structure

APPLICATION

STP profiled stay-in-place formwork for construction joints is used to perform construction joints in reinforced concrete structures.

REFERENCE DOCUMENTS

- Catalogue: *Shuttering accessories*

FITTING METHOD

Height over 1.20 m is achieved by connecting the mats using sheet metal screws. Ideal in combination with the P-100 injection system. To a height of 30 cm STP is self-supporting, above the height we use stabilizers and stiffen with the reinforcement mesh. At the height of more than 90 cm, we use reinforcement bars.

STORAGE / TRANSPORT

STP profiled stay-in-place formwork should be transported on pallets. Protect from damage during storage and transportation.

NOTES

Observe the OHS regulations while using the product.

TECHNICAL AND COMMERCIAL DATA

Symbol	Thicknes s [mm]	Dimensions		Packaging bundle [pcs]	Unit of sale	Weight [kg/pc.]	Article No.
		width b [mm]	length l [mm]				
STP h=1200 mm l=2250	0,7	1,20	2,25	20	pcs	10,80	AS-TR-PR-1-00178
STP h=1000 mm l=2250	0,7	1,00	2,25	20	pcs	9,00	AS-TR-PR-1-00177

2015.07.24/084

This data sheet was developed by FORBUILD SA and remains the property of the company.
Reprinting, copying and sharing data sheet in whole or in part to persons to whom it is not addressed, without the written permission of FORBUILD SA is prohibited.
Legal basis - Journal of Laws No. 24/1994 item 83 with later amendments. The Act on copyright and related rights.